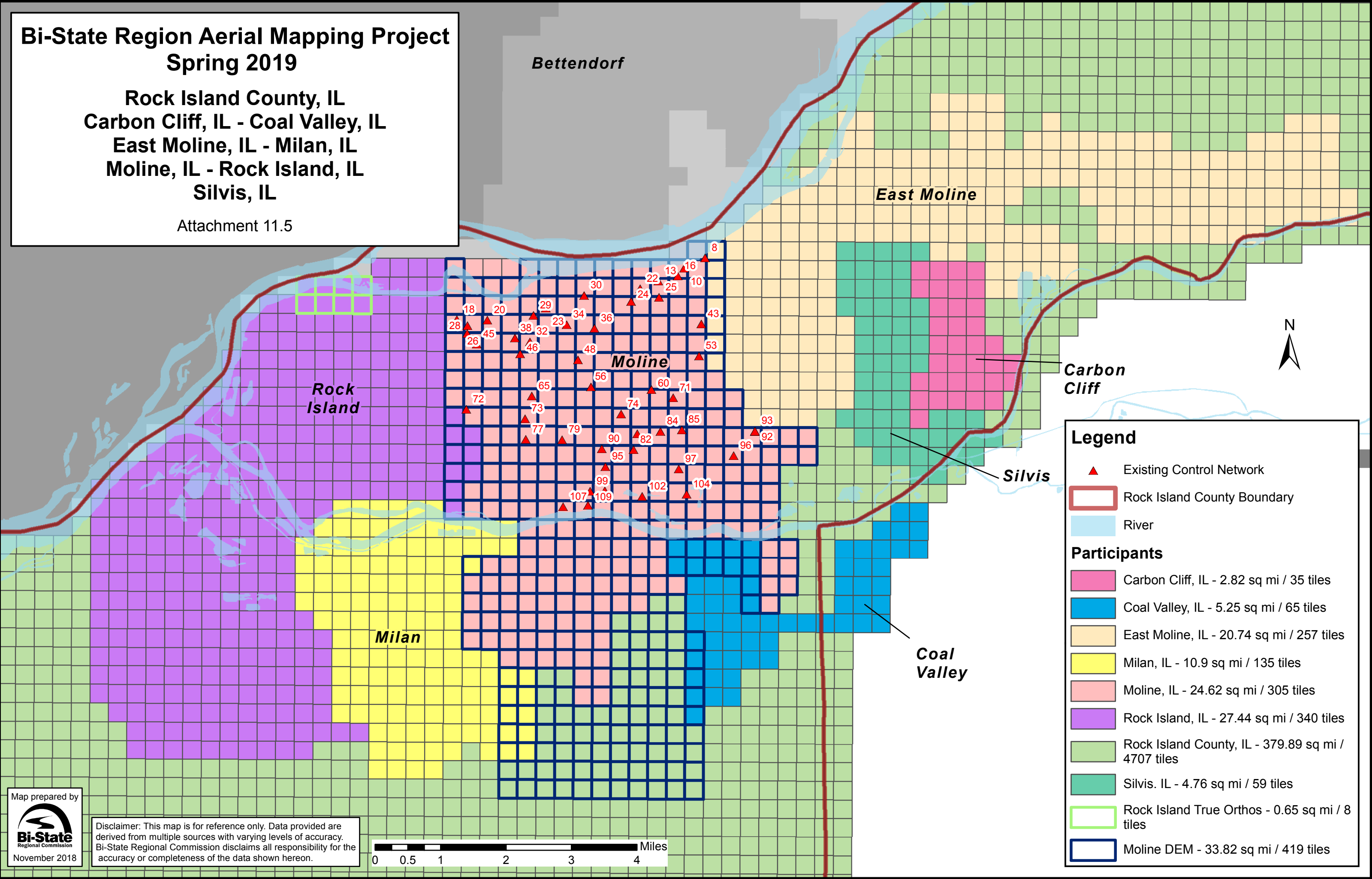


Bi-State Region Aerial Mapping Project Spring 2019

Rock Island County, IL
 Carbon Cliff, IL - Coal Valley, IL
 East Moline, IL - Milan, IL
 Moline, IL - Rock Island, IL
 Silvis, IL

Attachment 11.5



Legend

- ▲ Existing Control Network
- Rock Island County Boundary
- River

Participants

- Carbon Cliff, IL - 2.82 sq mi / 35 tiles
- Coal Valley, IL - 5.25 sq mi / 65 tiles
- East Moline, IL - 20.74 sq mi / 257 tiles
- Milan, IL - 10.9 sq mi / 135 tiles
- Moline, IL - 24.62 sq mi / 305 tiles
- Rock Island, IL - 27.44 sq mi / 340 tiles
- Rock Island County, IL - 379.89 sq mi / 4707 tiles
- Silvis, IL - 4.76 sq mi / 59 tiles
- Rock Island True Orthos - 0.65 sq mi / 8 tiles
- Moline DEM - 33.82 sq mi / 419 tiles